

AUSTRALIAN

NEW HOLDEN
FIRST OFFICIAL PICTURES & DETAILS

MAY
1961

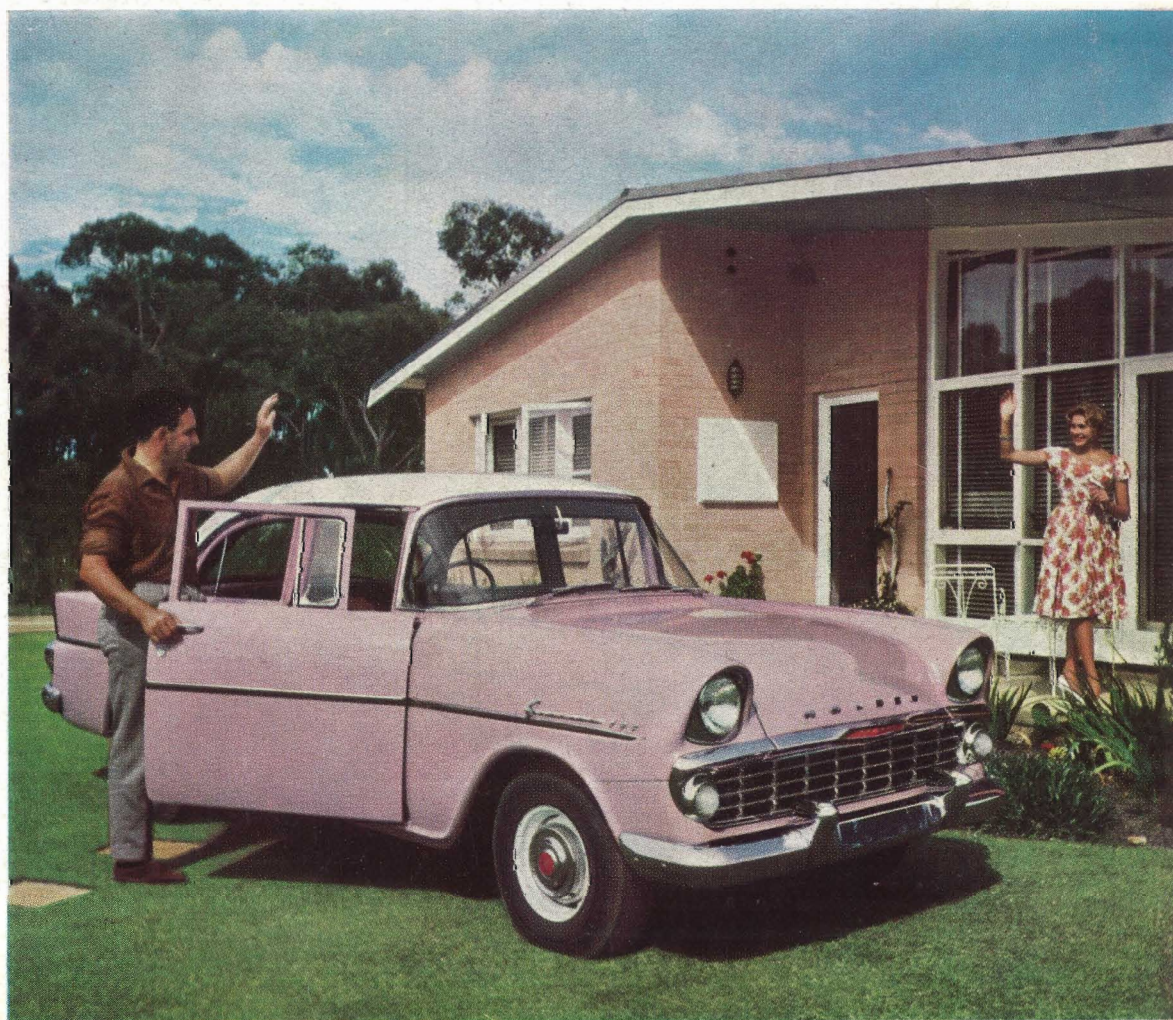
Motor Sports

AND

Automobiles

2/6

VOLUME 16
No. 5



"A.M.S."

16th year of
publication

In this issue

THE 1961 HOLDEN
POTENT TYPE: JAGUAR
MELBOURNE MOTOR SHOW
JACK MYERS—N.S.W. HILL CLIMB CHAMPION

HUME WEIR INTERNATIONAL
EASTER BATHURST MEETING
EASTER AT PHILLIP ISLAND
PORT WAKEFIELD FINALE

LATE NEWS

FIRST E TYPE SUCCESS

Jaguar's new E type (see story on page 172) proved itself in its first competition appearance by coming first and third in a Grand Touring event at Goodwood, Oulton Park (England) on April 15.

Driven by Graham Hill and Roy Salvadori the two cars led the field almost to the finish of the 25 lap event. At that stage, Salvadori, who was troubled by a sticking accelerator linkage, was passed by Innes Ireland (Aston Martin DB4GT).

On the twisty 2.7 mile circuit the Jaguars showed they were faster and were handling better than the more costly modified Ferraris and Aston Martins.

For a production car which has been designed to be as much at home on the highway as on the race track the E type has proved itself a really potent performer.

1600 ENGINE FOR RAPIER

The Sunbeam Rapier in Britain is now being fitted with the larger 1.6 litre motor from the Sunbeam Alpine sports car.

The larger engine has increased the car's b.h.p. from 78 at 4,500 r.p.m. to 80.25 at 5,100 r.p.m. Torque has increased from 84 lb. ft. at 3,500 r.p.m. to 88.2 lb. ft. at 3,900 r.p.m.

The engine now has a stiffer crankshaft, larger bearings, modified con-rods and gudgeon pins and a stronger clutch.

YOUR CAR!

Increase its M.P.G. and Unleash EXTRA Power by fitting a GENUINE

LUKEY MUFFLER

(Every LUKEY MUFFLER is name stamped; so look for the name.)

For Facts, Figures and ½-hour Fitting

LUKEY MUFFLERS, 1142 Nepean Highway, Highett, Vic.
(Phone: XL 3641).

Also at 109 Alfred St., Valley, Brisbane (Phone: 5-2078)

In N.S.W. — JACK MYERS, 491 Anzac Parade, Kingsford (FJ 4007).

Sth. Aust. — AUTO CONVERSIONS LTD., 243 Pirie St., Adelaide (W 6802).

West. Aust. — SYDNEY ANDERSON, 1 William St., Perth (21-9134).

Tasmania — MAX STEPHENS, 108 Sandy Bay Road, Hobart (2-6608).

LE MANS MOTORS, 7 Dry St., Launceston (2-5058).

Or Order Through Your Local Garage.



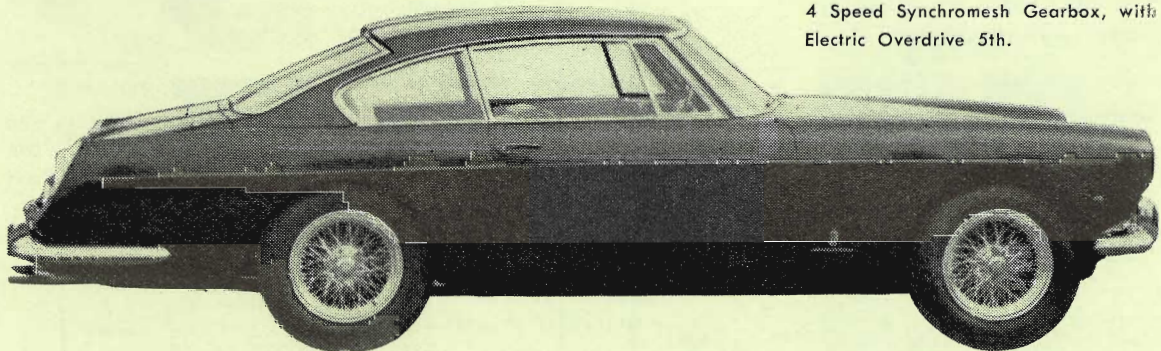
250 GT Ferrari

PININ FARINA COUPE 2+2

Docile as a lamb — Vicious as a stallion

240 b.h.p. at 7,000 r.p.m. — 0-100 m.p.h. 13 secs. — Max. Speed 154 m.p.h.

4 Speed Synchromesh Gearbox, with Electric Overdrive 5th.



Sole Australian Representative: **W. H. LOWE & CO. PTY. LTD.**

188 WHITEHORSE RD., BALWYN, VIC. — WY 1379

N.S.W. Distributor: DIESEL MOTORS, 241 Parramatta Rd., Auburn.